

Geelong Library and Heritage Centre



Patti Manolis, Chief Executive Officer
Geelong Regional Library Corporation

Outline - will be covering:

Little bit about where I am from and then some information about the Geelong Library and Heritage Centre Project.



From Geelong, located in the state of Victoria, Australia.

Geelong Library and Heritage Centre Background



I'd like to provide you with a little context about Australia. It's big. In fact, it's the world's sixth largest country geographically, occupying an entire continent. Its land mass is nearly 8 million square kilometres.

Australia “a nation of indigenous peoples and immigrants”



- Travelling around Copenhagen and now Aarhus has struck me at how relatively young Australia is as a nation with white settlement occurring 230 years ago.
- However having said that Australia is also home to the oldest culture in the world.
- Australia’s indigenous people can trace their presence back sixty thousand years. So, in terms of settlement, Australia is both very old and very young.
- The Wathaurong People are the Geelong Region’s Indigenous People. They are a recognised tribe consisting of 25 clans.

Geelong Library and Heritage Centre

Australian States and Territories



- Australia comprises [six states and several territories](#).
- The population of 23 million is heavily concentrated in the [Eastern states](#) and is highly [urbanised](#).
- Their ancestry is mainly European, although increasingly from other parts of the world, especially Asia, the Middle East and, most recently, Africa.
- Only 455,000 Australians are Aboriginal.
- The great majority of the population resides around the coastline, especially along the east coast.
- Australia is the world's driest continent and much of the land is not fit for human habitation.
- My home state of Victoria, in the south east, is the second smallest at 237,629 km² However, it is the second most populous state after New South Wales, with 5.5 million residents.
- In geographic as well as population terms Victoria is about the same size as our neighbour, New Zealand (268,671m²).



- Geelong Region comprises the municipalities of City of Greater Geelong, Golden Plains Shire, Borough of Queenscliffe, Surf Coast Shire
- 265,000 people
- 2nd most populous City and region in Victoria and fifth in the nation
- Port City, University / Student City
- History mainly built up during gold rush period
- Sheep and wool industry
- Ford Motor company
- Shell oil refinery
- A diversity of economic activity
- City and Region in transition from manufacturing and heavy industry to Knowledge and Service based industry City such as tourism, health, education.
- Major economic focus on fostering industries that concentrate on innovation, knowledge and research eg biotechnology, advanced manufacturing and food processing, ICT
- Time is right indeed overdue for major learning and cultural institutions such as libraries



Geelong Library and Heritage Centre

Geelong Regional Library Corporation

- Population served = 265,000 and growing to 500,000 by 2050
- Geographic area = 5,500 km²
- 16 libraries and 2 mobile libraries (3 new libraries opened in past 18 months)
- Operational Budget \$10m
- 123 staff (78 EFT)

Annual activity

- 430,000 collection items
- Over 100,000 library members
- 2.6m loans of print collections; 120,000 loans of e-collections and growing
- 1.6m physical visits / 750,000 website visits
- 85,000 plus attendances to lifelong learning programs
- 190,000 plus hours internet computer access
- 110,000 plus wireless internet access sessions

I'd like to tell you about the organisation I lead.

Geelong Regional Library Corporation

Largest service in Victoria of 45 library services by number of libraries

- Population served = 265,000 and growing to 500,000 by 2050
- Geographic area = 5,500 km²
- 16 libraries and 2 mobile libraries (3 new libraries opened in past 18 months)
- Operational Budget \$10m
- 123 staff (78 EFT)

Annual activity

- 430,000 collection items
- Over 100,000 library members
- 2.6m loans of print collections; 120,000 loans of e-collections and growing
- 1.6m physical visits / 750,000 website visits
- 85,000 plus attendances to lifelong learning programs
- 190,000 plus hours internet computer access
- 110,000 plus wireless internet access sessions



Quite a diverse range of buildings.

3 new libraries opened in past 18 months (Top 3 far right in slide).

We have libraries in shopping centres, leisure hubs, joint use with schools, with customer service centres or as they are called here, citizen services and stand alone.

Geelong Library and Heritage Centre

Geelong Library and Heritage Centre

Geelong City Library opened August 1959



Original Library was single storey.

Opened in 1959.

The Geelong Library service actually commenced way back in 1880s.

In terms of size it is about 700m² of usable public space.

Was great for 1959 but woefully inadequate for today and tomorrow.

Staffing 8 EFT.



Geelong Library and Heritage Centre

Geelong Library and Heritage Centre



Current Geelong City Library

Geelong Heritage Centre added in 1970s becoming double storey.

One of the great things about the project will be the integration of the Geelong Heritage Centre. It will be a dept of GRLC.



Geelong Library and Heritage Centre

Geelong Library and Heritage Centre



Current Geelong City Library.

A couple of weeks ago we had a formal closing ceremony. Marched out of the building to drums and turned off the lights for the final time.

Library now housed across the road in the building you see top left ground floor. Only 300m² but purpose built, cosy and nice.

Great for navigation as only across the road.

Community will see new Library emerging across the road.



Geelong Library and Heritage Centre

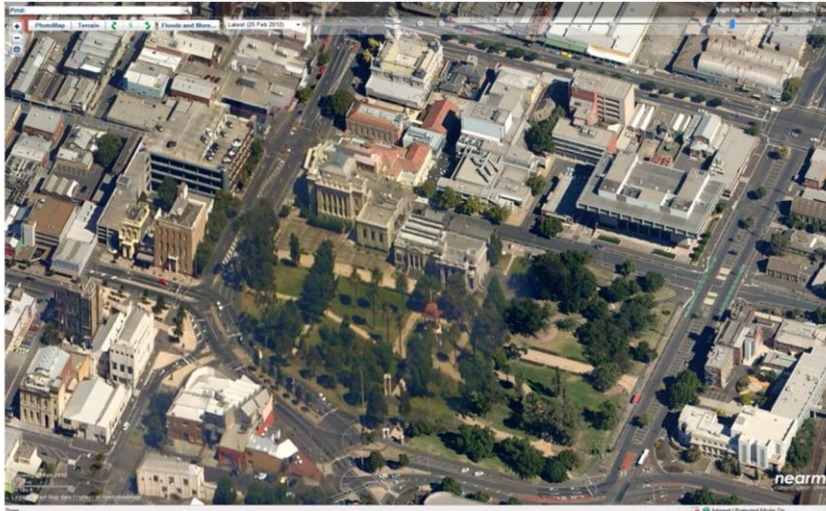
Geelong Library and Heritage Centre



Current Geelong City Library - temporary

Geelong Library and Heritage Centre

Geelong Library and Heritage Centre



Aerial slide

Located in Civic and Cultural Precinct.

We are very fortunate that the City of Greater Geelong Council decide to invest in a new Library \$45M

In recognition that public libraries are being reinvented.

“once in a civilization shift”

Cutting edge cultural and community hub.

Surrounded by architecturally and culturally significant facilities and buildings including City Hall, Geelong Gallery and Geelong Performing Arts Centre. Most significant is the setting adjacent to beautiful heritage Johnstone Park.

Geelong Library and Heritage Centre

Geelong Library and Heritage Centre



Current plan / concept ARM ARCHITECTURE. Previous work includes National Museum of Australia, Melbourne Recital Hall, Hamer Hall Arts Centre Corio Bay setting and views.

The GLHC purpose in terms of broader outcomes:

- Significant cultural and learning institution in heart of city and cbd
- Iconic architecturally designed landmark. Make a statement about where Geelong is headed and what it values – learning and culture.
- Contribute to placemaking and urban socio-cultural regeneration
- Anchor for cultural precinct in recognition that libraries generate the most activity of all the institutions
- Major destination and attractor of visitors from within and outside the region (eg Seattle)
- A centre for discovery about Geelong and the Geelong Region taking Geelong to the world and bringing the world to Geelong.
- Central library for a large network of regional and neighbourhood libraries
- The local Library / Community centre / community living room for cbd residents and workers

Features

- 120,000 collection items
- Exhibition and Display areas
- House a special Arts based collection and historical records, documents and some

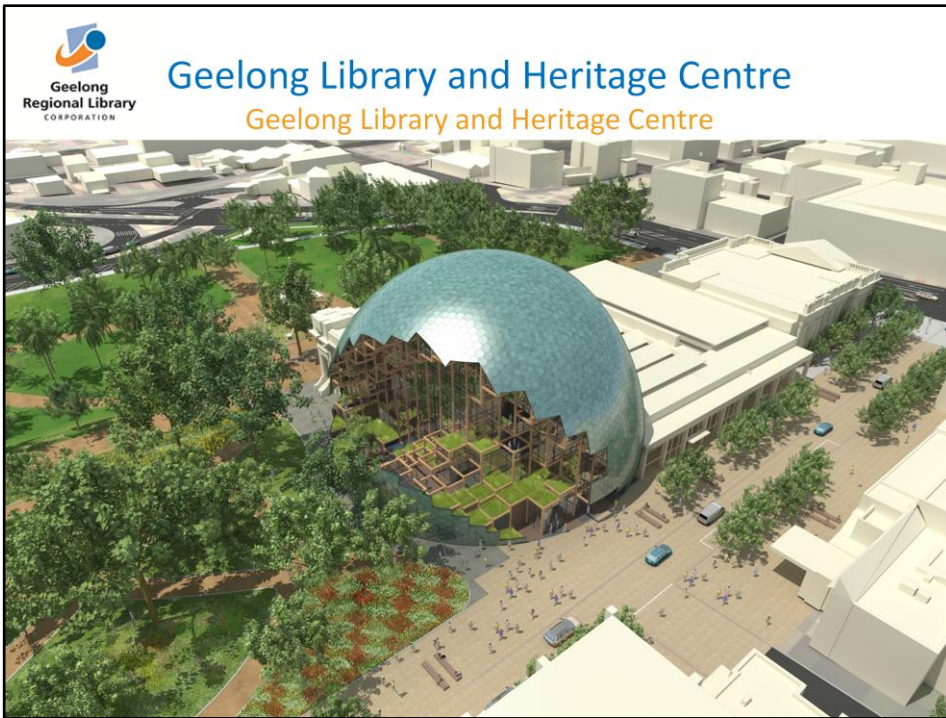
artefacts

- Children's space
- Youth space
- Meeting rooms and collaborative learning spaces
- Special collections
- Digital space / diverse offer of IT
- Opening October 2015
- 6,000m²
- BG,G,1,2,3,4 = 5 levels

This new Library will enable us to deliver on the GRLC vision

A strong vibrant connected community

- Enriched by reading
- Empowered by learning
- Inspired by information and ideas.



What the concept looked like at first. Was too expensive and couldn't build it!



Geelong Library and Heritage Centre

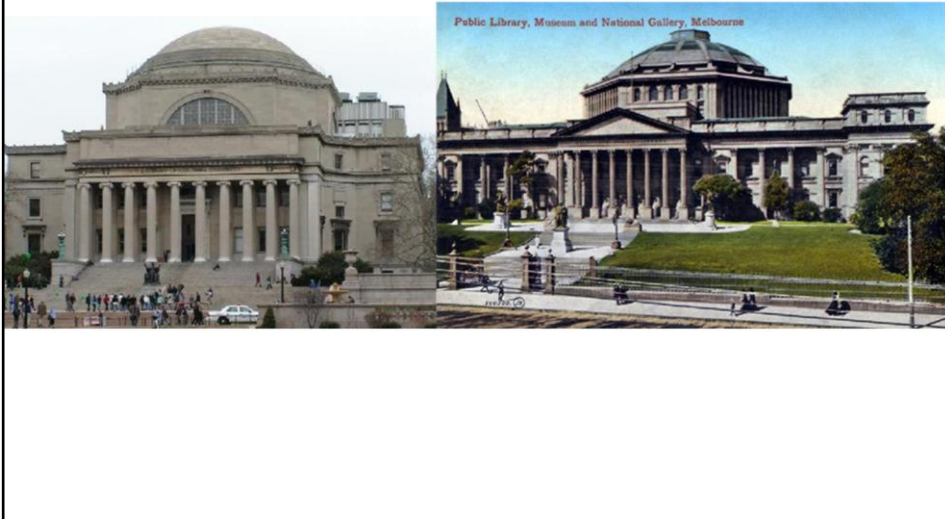
Geelong Library and Heritage Centre





Geelong Library and Heritage Centre

Geelong Library and Heritage Centre



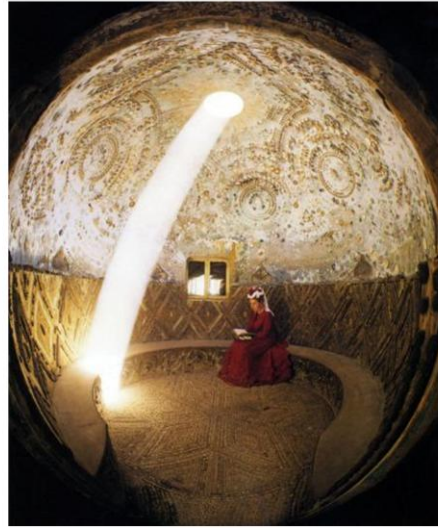
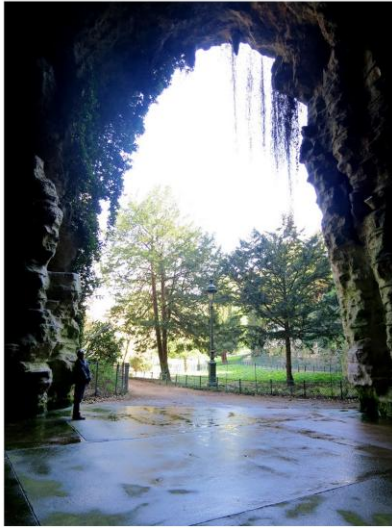
Looked at design in terms of recognising that there is a major shift in library services and how they are to be delivered. Also wanted to pay respect, recognise and celebrate the history of libraries.

So now I will take you through some of the inspirations.

Inspired by domes of the world including the State Library of Victoria. Columbia University Library New York.



Temple of the Medica a ruin of late imperial Rome.



Grotto in Werribee Park Mansion.
Grotto of the Parc des Chaumont.

Geelong Library and Heritage Centre

Geelong Library and Heritage Centre



State Library of Victoria on right.



Geelong Library and Heritage Centre

Geelong Library and Heritage Centre



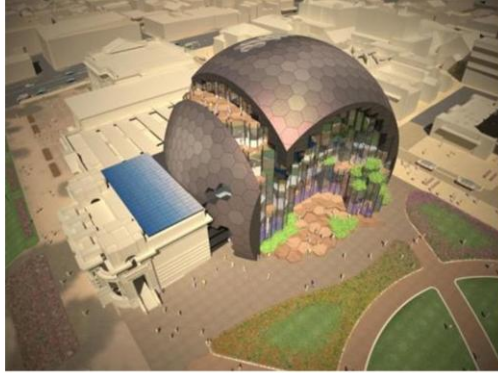
Geodesic Domes

Richard Buckminster was an American architect, systems theorist, author, designer, inventor, and futurist. Invented the geodesic dome. Examples on screen.



Geelong Library and Heritage Centre

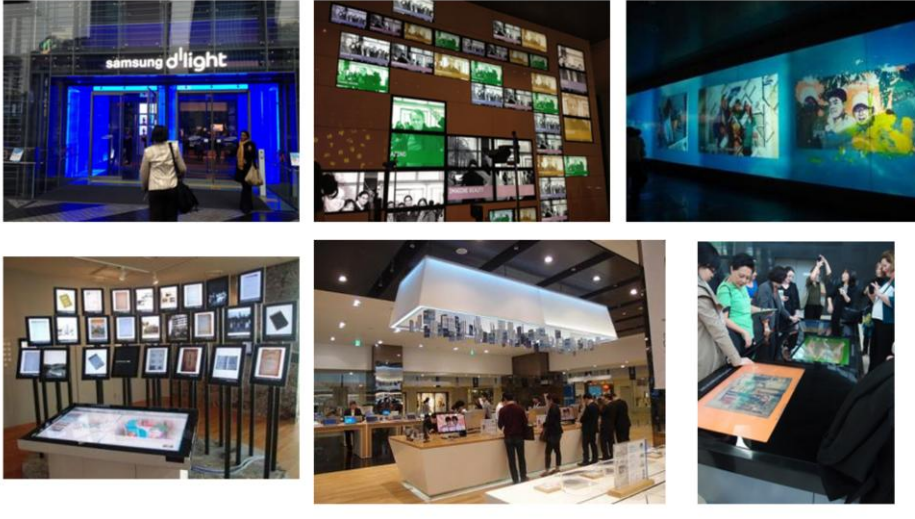
Geelong Library and Heritage Centre



Will be the major landmark for the precinct. Out of this world design.

Geelong Library and Heritage Centre

Geelong Library and Heritage Centre



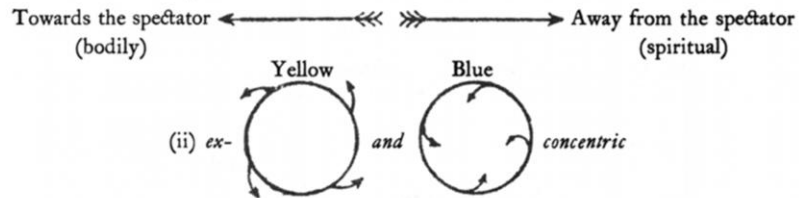
- I am going to take you through some of the interior inspirations in a moment. I just wanted to highlight that a recent trip to South Korea is informing choices for IT.
- IT currently not shown in drawings. Will depend on budget. Current internal fitout budget is only 6% of total budget so we are looking at ways to improve that. It is a significant challenge.
- Samsung D'Light, Dibrary, Seoul Metropolitan Library

Geelong Library and Heritage Centre

Geelong Library and Heritage Centre

There are many theories of Colour and its effects and meanings

Vasily Kandinsky ("On the Spiritual in Art", 1914) believed that there were two fundamental colour modes – warm and cool; towards yellow and towards blue.....



Many colour theories attempt to explain or predict colour phenomenon with human response. It is possible that responses to colour are universal AND cultural.....

In terms of interior colour the architects have been inspired by Kandinsky's belief that there were two fundamental colour modes warm and cool and by Goethe's theory of colour.

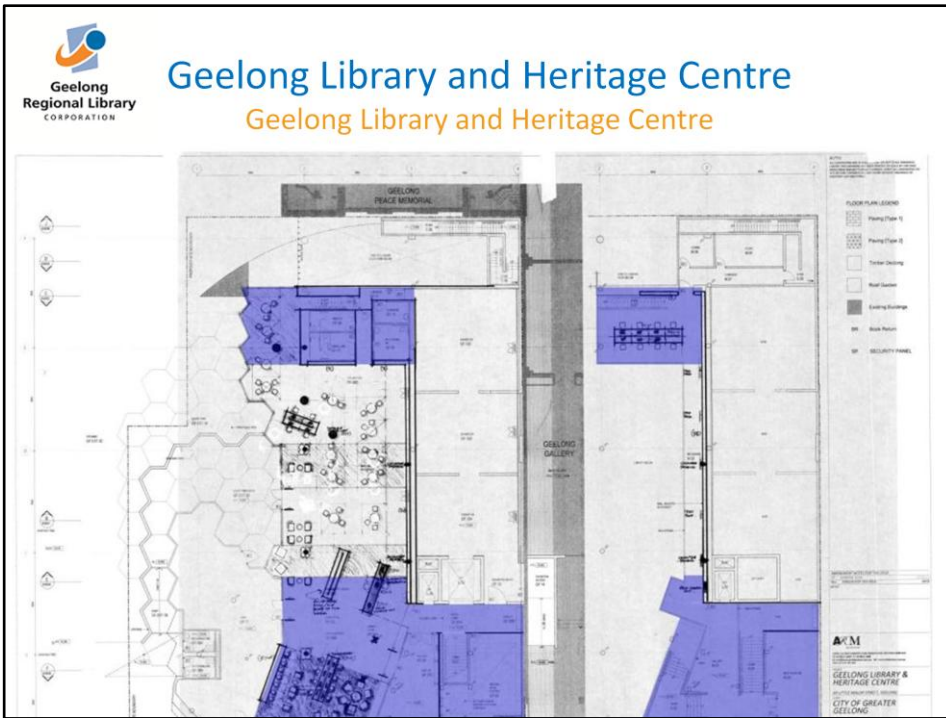


Geelong Library and Heritage Centre

Geelong Library and Heritage Centre



Ground Floor no colour shown



Blocks of colour at ends of the building.



Yves Klein (Artist) Blue

Blue is the colour of the sky and sea. It is often associated with depth and stability. It symbolizes trust, loyalty, wisdom, confidence, intelligence, faith, truth, and heaven.

It has been the colour of divinity, royalty and virtue as in the robes of the Madonna.

Blue is strongly associated with tranquillity and calmness. In heraldry, blue is used to symbolize piety and sincerity.

Blue is linked to consciousness and intellect. Blue is considered beneficial to the mind and body.

Dark blue is associated with depth, expertise, and stability.

Light blue is associated with health, healing, tranquillity, understanding, and softness.

Dark blue represents knowledge, power, integrity, and seriousness.

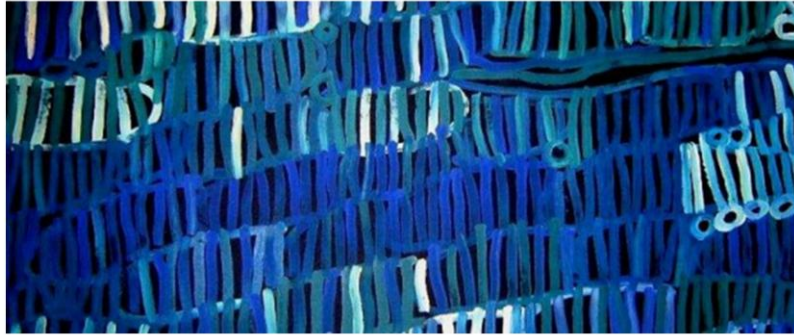
The colour of Corio Bay. Significant to Indigenous culture, post settlement history and a major attractor and source of pride for community today.



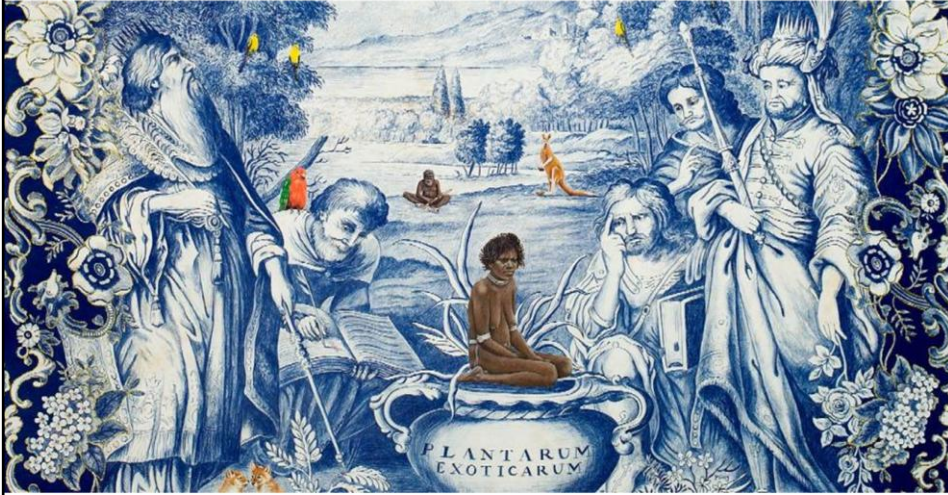
Matisse



Matisse



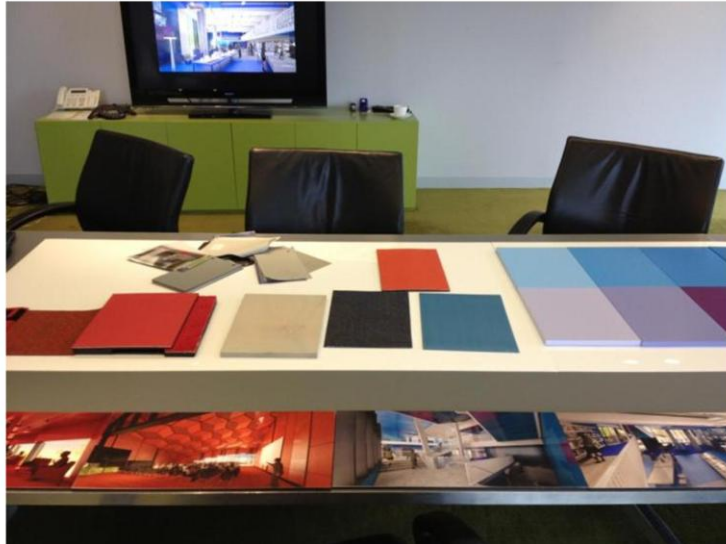
Blue and Green Body Painting by Aboriginal Artist Minnie Pwerle.



Reality of Myth by Danie Mellor Aboriginal Artist

Geelong Library and Heritage Centre

Geelong Library and Heritage Centre



Colour samples.



Geelong Library and Heritage Centre

Geelong Library and Heritage Centre





Geelong Library and Heritage Centre

Geelong Library and Heritage Centre



Geelong Library and Heritage Centre

Geelong Library and Heritage Centre



Collection wall to use limited ground floor space efficiently. Also a sort of homage to the classical library with a wall of books.



Geelong Library and Heritage Centre

Geelong Library and Heritage Centre



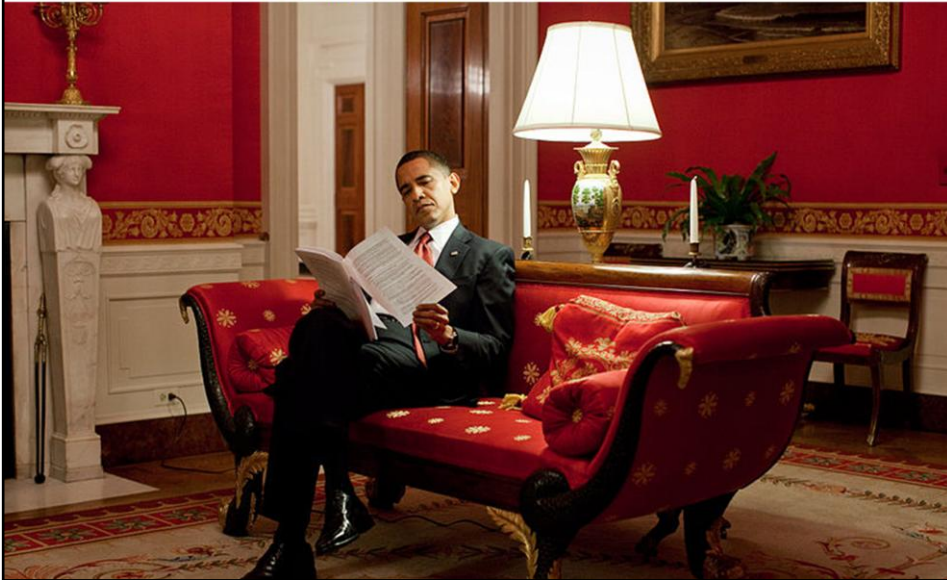


Matisse again

Heritage Centre colour



David Lynch as inspiration?



Obama's Reading Room.



Geelong Library and Heritage Centre

Geelong Library and Heritage Centre



Heritage Centre Reading Room



Geelong Library and Heritage Centre

Geelong Library and Heritage Centre



Heritage Centre Reading Room



Mark Rothko painting *orange and yellow*



Georgia O'Keefe's Orange Poppy



Geelong Library and Heritage Centre

Geelong Library and Heritage Centre



Flexible function space for up to 300 people
IT Video conferencing major events etc



Geelong Library and Heritage Centre
Geelong Library and Heritage Centre

Thank you for listening

More Information

patti.manolis@grlc.vic.gov.au

www.grlc.vic.gov.au